

Accommodation Host Family

LOCATION

Close to Nacel English School London (walking distance or a short bus/underground journey – maximum 4 underground stops)

DESCRIPTION

Our host families are not just a short distance away, but are also of the highest standard, as Nacel English School London is located in an excellent residential area of north London.

Host family accommodation (Homestay) is the best option for students. Not only is the location ideal, it is also the most affordable way to live in London. In addition, living with a host family enables students to practise English outside School, and helps them to integrate fully into the British way of life.

Knowing how important home life is for students, all of our Homestay families are carefully selected and regularly monitored by our Accommodation Officer.

Many of our host families have successfully worked with us over several years and students still keep in touch with their 'London' family long after they have finished their studies.

WE HAVE TWO TYPES OF HOMESTAY AVAILABLE

HOMESTAY (Half-Board)

This accommodation includes breakfast and evening meals, making this type of accommodation the most economical way to live in London.

HOMESTAY (BED & BREAKFAST – SELF-CATERING)

This accommodation includes breakfast only. The student will have access to the kitchen for drinks and the preparation of simple food.



Prices

Accommodation Placement fee	£55
-----------------------------	------------

Half Board – breakfast and evening meal
7 nights a week

Duration	Single room per week	Shared room per week per person*
1-11 weeks	£185	£165
12-23 weeks	£180	£160
24+ weeks	£175	£155

Extra nights will be charged at a rate of £35

Bed & Breakfast – self-catering

7 nights a week	Single room per week	Shared room per week per person*
	£160	£150

Extra nights will be charged at a rate of £30

* Shared room only available to students arriving and departing at the same time.

A limited number of en-suite rooms are available on request at an extra charge of £55 per week. The upgrade to an en-suite can only be confirmed once flight details have been received.

During the 2 week Christmas holidays (16th December 2017 to 2nd January 2018) there will be an extra charge of £45 per week and full-board will be provided.

Summer supplement: £15 per week (From 25/06/17 – 27/08/17)

Accommodation - Halls of Residence

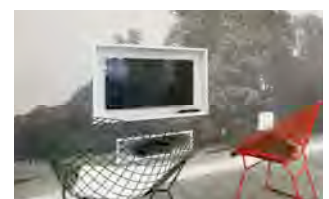
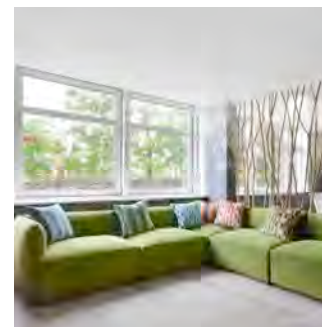
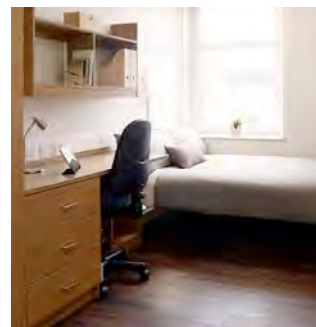
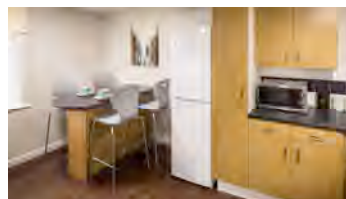
Tufnell House

LOCATION

This residence is a short walk to Archway underground station (Northern Line) and then approximately 8 minutes on the underground (4 stops) to Finchley Central Station. Travel to central London takes 10 minutes.

DESCRIPTION

Tufnell House offers modern spacious en-suite bedrooms in shared apartments, with a shared kitchen and living area. Refurbished to the highest standards, the residence stands in landscaped gardens and features an on-site gym, lounge areas with Sky TV and special study spaces. Bedding and linen is provided on arrival, however students are responsible for cleaning their own bedroom, bathroom and common areas and laundering their bed linen. This residence is located only a short walk away to Hampstead Heath, and Camden Town, famous for its markets and restaurants. Students are advised to bring bath towels.



Prices

Accommodation Placement fee	£55	
Per person per week.	Duration	
Self catering	13 weeks or more	Less than 13 weeks
En-suite Standard room	£263	£273
En-suite Superior room	£282	£289

Features

- Fully equipped kitchens ✓
- 24 hour reception with CCTV and secure door entry ✓
- Free WiFi ✓
- Landscaped gardens and BBQ area ✓
- Onsite laundrette ✓
- On-site gym ✓
- Utility bills included ✓
- Study and games rooms ✓
- Security bike storage ✓
- Lounge with Sky TV ✓

TERMS & CONDITIONS:

Minimum age 18.

Minimum stay 4 weeks. (For stays of 1, 2 or 3 weeks please enquire as we may be able to make an exception at the time of booking).

Stays departing in October, November or December will not be accepted. Details of refunds for cancellations before or after arrival are included in our Conditions of Enrolment (27e and 27f).

Please note that Residential Accommodation is provided by a third party Residential Accommodation Agency

Please read our full Conditions of Enrolment.

Accommodation - Halls of Residence Beaumont Court

LOCATION

Beaumont Court is approximately 10-minute walk from Camden Town underground station on the Northern line (6 stops – 15 minute journey). Mornington Crescent underground station on the Northern line is also a short walk away. Also easy access to King's Cross station.

DESCRIPTION

The residence consists of apartments of 5, 6 and 7 single rooms all with en-suite shower rooms (toilet, washbasin and shower cubicle) and fully equipped shared kitchen/sitting area with breakfast bar, stools and sofa.

Bedrooms are furnished with a large bed, chest of drawers, wardrobe, mirror, shelves, lights, curtains, desk, chair and fitted carpet. Corridors and kitchens are cleaned weekly. Students are responsible for cleaning their own bedroom and bathroom, and cleaning their bed linen (which is provided). Students are advised to bring bath towels.

There is an on-site launderette, common room with TV, CCTV and bike storage. Internet access is included in the price.

Prices

Accommodation Placement fee	£55	
Per person per week.	Duration	
Self catering	13 weeks or more	Less than 13 weeks
En-suite single room	£285	£295

Features

Fully equipped kitchens	✓
Student lounge with large TV	✓
Coin operated launderette	✓
CCTV	✓
Bike storage	✓
Free WiFi	✓
Cleaning of common areas	✓
Bed linen provided	✓



TERMS & CONDITIONS:

Minimum age 18.

Minimum stay 4 weeks. (For stays of 1, 2 or 3 weeks please enquire as we may be able to make an exception at the time of booking).

Stays departing in October, November or December will not be accepted. Details of refunds for cancellations before or after arrival are included in our Conditions of Enrolment (27e and 27f).

Please note that Residential Accommodation is provided by a third party Residential Accommodation Agency

Please read our full Conditions of Enrolment.

Accommodation - Halls of Residence

The Stay Club Camden

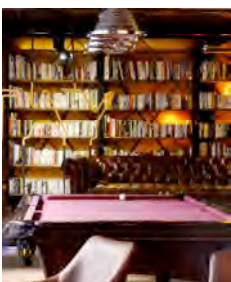
LOCATION

Camden is one of London's most popular tourist destinations. The residence is close to Camden Lock, in the heart of the famous Camden Market and only a 5-minute walk to Camden underground station (6 underground stops on the Northern Line to Finchley Central - less than a 15-minute journey on the underground).

DESCRIPTION

The residence consists of Single and Twin/Double Occupancy Studios. The studios have a private kitchenette (fridge freezer, microwave, cooker, kettle, pans, cutlery, glasses, and cups), 2 double beds, desk, free Wi-Fi, en-suite showers, plenty of mirrored cupboard space and are decorated to a high standard. Students can hang out with friends in the 2 lounge areas, play a game of pool or enjoy the outdoor space.

There is also a lovely café where students can buy snacks and drinks or have full meals (breakfast, lunch and dinner).



Prices	
Accommodation Placement fee	£55
Per person per week.	
Single Occupancy Studio	£343
Twin/Double Occupancy Studio	£399
Features	
24-hour Reception	✓
CCTV	✓
Free Wi-Fi	✓
2 Lounge areas with a large TV	✓
Pool table area	✓
Café/Restaurant	✓
Outdoor Space with tables and chairs	✓
Study rooms	✓
Weekly cleaning of studios	✓
Weekly fresh linen and towels	✓
Daily cleaning of Communal parts	✓
Coin and Card operated Laundrette	✓
Bike storage	✓



TERMS & CONDITIONS:

Minimum age: 18 (At the Stay Club Camden students age 16 and 17 are accepted if accompanied by a responsible adult)

Minimum stay: 1 week

Details of refunds for cancellations before or after arrival are included in our Conditions of Enrolment (28c and 28d).

Please note that Residential Accommodation is provided by a third party Residential Accommodation Agency

Please read our full Conditions of Enrolment.

Accommodation - Halls of Residence The Chapter King's Cross

LOCATION

Made famous as the 'Nido' building, this recently refurbished residence is just a 5-minute walk to King's Cross St. Pancras underground station and only 8 underground stops on the Northern Line to Finchley Central underground station (20-minute underground journey).

DESCRIPTION

This residence consists of Single and Twin en-suite rooms and large communal areas with free access to the Gym & Exercise Studio and shared kitchen. Students are advised to bring bath towels.



Prices

Accommodation Placement fee	£55
-----------------------------	-----

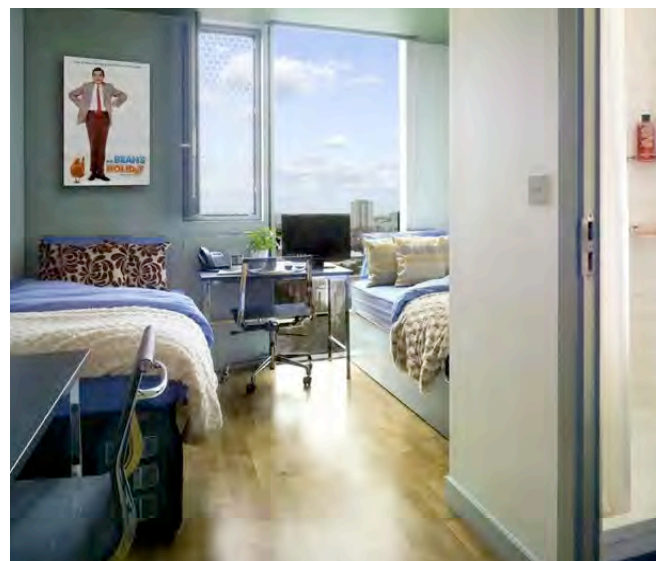
Per person per week. Self catering

Single en-suite room	£339
----------------------	------

Twin en-suite room	£450
--------------------	------

Features

24-hour Reception	✓
Fully equipped kitchens	✓
CCTV	✓
Free Wi-Fi	✓
Study Rooms	✓
Games Area	✓
Gym & Exercise Studio	✓
Outside Courtyard Space	✓
Weekly cleaning of rooms	✓
Daily cleaning of Communal parts	✓
Coin and Card operated Laundrette	✓



TERMS & CONDITIONS:

Minimum age: 18

Minimum stay: 1 week

Details of refunds for cancellations before or after arrival are included in our Conditions of Enrolment (28c and 28d).

Please note that Residential Accommodation is provided by a third party Residential Accommodation Agency

Please read our full Conditions of Enrolment.

Accommodation - Halls of Residence International Student House

LOCATION

This residence is located in the heart of London just opposite Regent's Park and only a 5-minute walk to Warren Street underground station (Northern Line, 9 stops - 20 minute journey to Finchley Central).

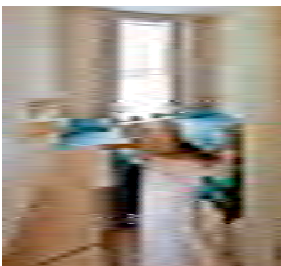
DESCRIPTION

The Residence consists of Single, Twin, Triple and Quad rooms, Dormitories with shared bathrooms. Single and Twin en-suite rooms are also available.

This residence provides daily breakfast which is included in the daily price rates.

Students can also buy lunch and dinner in the canteen style restaurant. The restaurant has a range of hot and cold meals, sandwiches, salads, desserts, confectionery and drinks. e.g. For half-board, add £8.50 per day and for full-board, £16.00 per day.

This residence does not have a shared kitchen.



Prices

Accommodation Placement fee	£55
-----------------------------	-----

Per person per day -
Including Continental Breakfast

Single En-suite	£58
Single Room:	£50
Twin En-suite:	£42
Twin Room:	£37
Triple Room	£32
Quad Room	£30
Dormitory (8-10 beds)	£25

Features

24-hour Reception	✓
CCTV	✓
Free WiFi	✓
Bar (for over 18s only)	✓
Canteen style restaurant open for breakfast, lunch and dinner	✓
TV Room	✓
Weekly Cleaning of Rooms	✓
Daily cleaning of Communal parts	✓
Coin/Card operated Laundrette	✓



TERMS & CONDITIONS:

Minimum age: 18 (students age 16 and 17 are accepted if accompanied by a responsible adult)

Minimum stay: 2 nights

Details of refunds for cancellations before or after arrival are included in our Conditions of Enrolment (29c and 29d).

Please note that Residential Accommodation is provided by a third party Residential Accommodation Agency

Please read our full Conditions of Enrolment.