

Overseas Students Prices 2019



nacel LONDON
English School

Accredited by the



53-55 Ballards Lane, London N3 1XP

Tel: +44 20 8343 3567

Email: info@nacelesl.co.uk • www.nacelesl.co.uk

REGISTRATION FEE EU £55

REGISTRATION FEE TIER 4 & SSV (SHORT TERM STUDY VISA) £75

- GENERAL ENGLISH LANGUAGE COURSES FOR ALL LEVELS
- UNIVERSITY OF CAMBRIDGE ESOL EXAM COURSES
FCE, CAE & CPE, IELTS, BEC AND OTHERS

We charge the same for General English Courses as University of Cambridge ESOL Exam courses.

Course Fees Price per week	Full Time Morning 15 hours per week* 9:30am - 12:45pm 5 days per week	Full Time Afternoon 15 hours per week* 1:45pm - 5:00pm 5 days per week	Full Time - Plus 21 hours per week* 9:30am - 12:45pm 5 days per week 1:45pm - 5:00pm 2 days per week	Semi Intensive 24 hours per week* 9:30am - 12:45pm 5 days per week 1:45pm - 5:00pm 3 days per week	Intensive 30 hours per week* 9:30am - 12:45pm 5 days per week 1:45pm - 5:00pm 5 days per week
1-2 weeks	£235	£200	£290	£315	£335
3-4 weeks	£220	£170	£265	£290	£315
5-8 weeks	£200	£160	£240	£265	£290
9-11 weeks	£185	£155	£230	£240	£255
3 month course (12 weeks)	£180 (£2,160)	£145 (£1,740)	£220 (£2,640)	£230 (£2,760)	£245 (£2,940)
6 month course (24 weeks)	£160 (£3,840)	£125 (£3,000)	£205 (£4,920)	£210 (£5,040)	£225 (£5,400)
1 academic year (36 weeks)	£145 (£5,220)	£120 (£4,320)	£185 (£6,660)	£190 (£6,840)	£205 (£7,380)
48 weeks or more	£130	£110	£165	£175	£200

All the course timetables are in blocks of three hours teaching plus 15 minutes break.

Students can enrol throughout the year starting any Monday

Free Complementary Nacel e-learning course with the following school course enrolments:

3 to 24 week school courses will receive 3 months free access to the Nacel e-learning course
25 to 52 week school courses will receive 6 months free access to the Nacel e-learning course
53+ week school courses will receive 12 months free access to the Nacel e-learning course

Start improving your English with us before arrival and after departure

As soon as your payment is received, you can request your log-in details for your free Nacel e-learning course. The learning platform will be accessible 24/7 from a computer, tablet or phone. Each e-lesson lasts 45 minutes and will allow you to listen, speak, read and write, improving your pronunciation, vocabulary and grammar.

This course is also adaptive, automatically increasing in difficulty as you progress, as well as being adaptable to include the topics that interest you most. It is available in 14 languages, which makes it easier, especially for more low-level students! The school will also be able to monitor your progress throughout your e-learning course.

ONE-TO-ONE Price per hour – **£55**

WORK EXPERIENCE INTERNSHIPS (FOR E.U. STUDENTS)

Unpaid work for experience - minimum English level Intermediate: **£450**

FREE UNIVERSITY APPLICATION GUIDANCE & SUBMISSION

We offer free professional advice and assistance with university applications. We work with higher education experts to provide students with professional consulting services, representing more than 100 UK universities.

Partner universities include Queen Mary University of London, University of Bath, University of Leeds, Oxford Brooks University, University of Manchester and many more.

PERSONALISED UNIVERSITY APPLICATION SUPPORT

Detailed help with your overall university application including support with writing your Personal Statement and CV to ensure that your application highlights your full potential

4 sessions: £295

UNIVERSITY STUDY SKILLS

A comprehensive 2 week introduction to academic study in English; preparing you for every aspect of university life.

2 week course (18 hours in total): £630

Dates: 7th January 2019 to 18th January 2019

2nd September 2019 to 13th September 2019

EXPERT UNIVERSITY WRITING SUPPORT

We provide personalised and individual help with university work by delivering proof-reading and essay structural support to students at their UK University.

1 Academic Year Membership: **£3,400.**

1 Academic Term Membership: **£1,500.**

Trial session (3 hours): **£190** (refundable on taking membership)

ENGLISH FOR SPECIFIC PURPOSES (ESP)

Medicine & Biology, Chemistry, Banking & Finance, Oil & Gas,

Engineering, Executive Management & Marketing, Law

Course Fees Price per week	Full Time - Morning 15 hours per week* 9:30am - 12:45pm 5 days per week	Full Time - Plus 21 hours per week* 9:30am - 12:45pm 5 days 1.45pm - 5:00pm 2 days
2 weeks	£1,800	£2,430
3 weeks	£2,685	£3,525
4 weeks	£3,520	£4,440

See Enrolment Form for course start dates

Reduced prices for groups of 5 students or more arriving and departing at the same time. Please enquire for group bookings.

TEACHER TRAINING REFRESHER COURSE

Refresher course for overseas teachers

Course Fees Price per week	Full Time - Plus 21 hours per week* including classroom observation
2 weeks	£890
Starting dates: 7th January; 25th March; 29th July; 5th August; 2nd December	

Reduced prices for groups of 5 students or more arriving and departing at the same time. Please enquire for group bookings.

AFTERNOON CODING COURSES

ADMISSION FEE: £30

15 Hours per week: **£350**
1:30pm - 5pm including 30mins break

Coding One-to-One Courses & Groups accepted all year round. Please enquire for prices and further details.

Tech Camps in classes with UK students.

Please enquire for dates

- **Game Programming with Java**
- **Python Coding**
- **iOS and AppleWatch App Development with Swift and Xcode**
- **Android Application Development with App Inventor**
- **Tech Entrepreneurship**

SUMMER EXTENDED REALIA COURSE

2 weeks course: £850

3 weeks course: £1,170

4 weeks course: £1,480

- 15 hours English course in the morning
- 12 hours Extended Realia lessons around London in the afternoon
- Oyster Card (bus and underground) to travel around London (zones 1-4, unlimited use)

Dates: 07/07/19 – 04/08/19

Available all year round for groups of 5 students or more. Please enquire.

EXTRA CURRICULAR CLASSES

Professional Sports Coaching (admission fee: £95):

Yoga, Tennis and many others

4 hours: £220 - 8 hours: £400 - 10 hours: £450

Horse Riding (admission fee: £95)

6 hours £424 (8 sessions of 45 minutes each)

Golf (admission fee: £95)

Private lessons

6 hours: £330 - 10 hours: £550

Gym available only two minutes walk from the School

Gym fees will apply.

Flower Arranging Courses (admission fee: £25)

2 hour workshops (Sunday 3.30-5.30pm)

Price: £65 including all materials

Half day extended floristry workshop:

Price: £165 including all materials

CLOSED GROUPS FOR JUNIORS AND ADULTS (Minimum age 12)

ACCEPTED ALL YEAR – POPULAR CLOSED GROUP PROGRAMMES:

English + Activities – Visit the Famous sights of London with our English Teachers

English + Computer Coding – Become a creator of technology not just a user

English + High School Experience – Get great insights into the British Educational System, develop your social skills and have the opportunity to make friends with native English students.

English + Work Experience – Be introduced to the world of work, to maximise your future employment prospects.

Business English + Visits to UK companies – See how companies, in different sectors, operate in the UK and have the opportunity to gain valuable knowledge and make new contacts.

Realia Method English on the Streets of London – Study English and learn about London’s history and culture outside of the classroom.

English Cultural Programmes for Mature Students – Visit famous London attractions and learn essential English for traveling

Please enquire for further details and prices.

AIRPORT TRANSFERS

	Arrival	Departure	Both ways	
Heathrow	£95	£70	£155	Our representative will wait a maximum of two hours after the arrival time given. The transfer fee is not refundable in case of longer delays or any other circumstances.
Gatwick	£130	£105	£210	
Luton	£95	£80	£165	
Stansted	£105	£90	£185	
Eurostar St. Pancras	£95	£70	£160	
Additional passenger	£55	£35	£80	

STUDENTGUARD+ STUDENT TRAVEL INSURANCE

Nacel English School London can book International Student Insurance for you for **£5.94** per week based on your dates of travel. Please visit our website for policy information.

ADDITIONAL EXPENSES

For General English and Exam Courses students are required to buy a course book per term.

Approximate cost: £30 per book.

Externally moderated exam fees (e.g.: University of Cambridge) are payable by the student through the School at approximately £140 per exam.

HOLIDAYS

The School is closed on Bank Holidays.

The UK bank holidays for 2019 are as follows: 1st January, 19th April, 22nd April, 6th May, 27th May, 26th August, 25th & 26th December.

There are no discounts, refunds or credits for classes missed on Bank Holidays.

The School will be closed for Christmas holidays from 23rd December 2019 to 4th January 2020.

The School re-opens on 7th January 2020.

Accommodation HOMESTAY

LOCATION

Close to Nacel English School London (walking distance or a short bus/underground journey – maximum 4 underground stops)

DESCRIPTION

Our homestay accommodation is not just a short distance away, but is also of the highest standard, as Nacel English School London is located in an excellent residential area of north London.

Homestay accommodation (host family) is the best option for students. Not only is the location ideal, it is also the most affordable way to live in London. In addition, living with a homestay family enables students to practise English outside School, and helps them to integrate fully into the British way of life.

Knowing how important home life is for students, all of our homestay families are carefully selected and regularly monitored by our Accommodation Officer.

Many of our homestay families have successfully worked with us over several years and students still keep in touch with their 'London' family long after they have finished their studies.

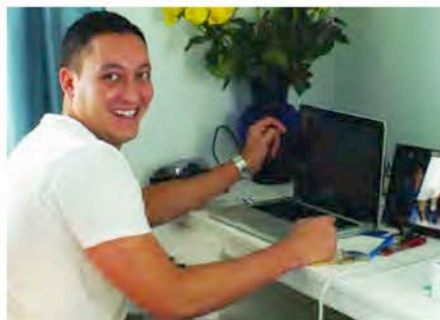
WE HAVE TWO TYPES OF HOMESTAY AVAILABLE

Half-Board

This accommodation includes breakfast and evening meals, making this type of accommodation the most economical way to live in London.

Bed & Breakfast - Self-Catering

This accommodation includes breakfast only. The student will have access to the kitchen for drinks and the preparation of simple food.



Students normally arrive and depart at the weekend. (7 nights' stay per week) Please read our full Conditions of Enrolment

Prices

Accommodation Placement fee £55

Half Board - breakfast and evening meal

7 nights a week

Duration	Single room per week	Shared room per week per person*
1 week	£190	£170
2-11 weeks	£185	£165
12-23 weeks	£180	£160
24+ weeks	£175	£155

Extra nights will be charged at a rate of £35

Bed & Breakfast - self-catering

7 nights a week	Single room per week	Shared room per week per person*
	£160	£150

Extra nights will be charged at a rate of £30

* Shared room only available to students arriving and departing at the same time.

A limited number of en-suite rooms are available on request at an extra charge of £55 per week. The upgrade to an en-suite can only be confirmed once flight details have been received.

During the 2 week Christmas holidays (23rd December 2019 to 6th January 2020) there will be an extra charge of £45 per week and full-board will be provided.

Summer supplement:
£30 per week (From 22/06/19 – 25/08/19)

Accommodation - Halls of Residence

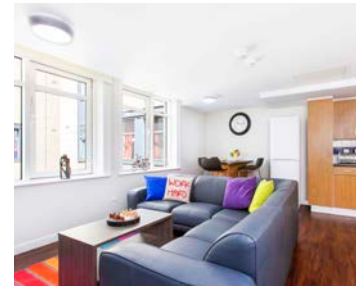
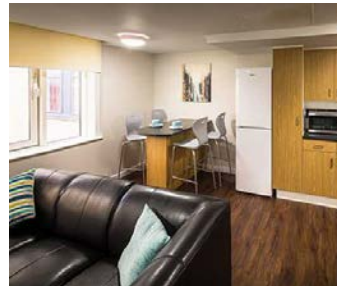
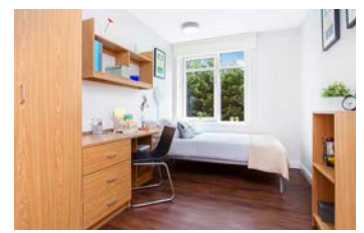
TUFNELL HOUSE

LOCATION

This residence is a short walk to Archway underground station (Northern Line) and then approximately 8 minutes on the underground (4 stops) to Finchley Central Station. Travel to central London takes 10 minutes.

DESCRIPTION

Tufnell House offers modern spacious en-suite bedrooms in shared apartments, with a shared kitchen and living area. Refurbished to the highest standards, the residence stands in landscaped gardens and features an on-site gym, lounge areas with Sky TV and special study spaces. Bedding and linen is provided on arrival, however students are responsible for cleaning their own bedroom, bathroom and common areas and laundering their bed linen. This residence is located only a short walk away to Hampstead Heath, and Camden Town, famous for its markets and restaurants. Students are advised to bring bath towels.



Prices

Accommodation Placement fee £55

Per person per week

Self-catering

	Less than 13 weeks	13 weeks or more
En-suite Superior room	£289	£282

Features

- Fully equipped kitchens ✓
- 24 hour reception with CCTV and secure door entry ✓
- Free WiFi ✓
- Landscaped gardens and BBQ area ✓
- Coin operated laundrette ✓
- On-site gym ✓
- Utility bills included ✓
- Study and games rooms ✓
- Secure bike storage ✓
- Lounge with Sky TV ✓
- Bed linen provided ✓

TERMS & CONDITIONS:

Minimum age 18.

Minimum stay 4 weeks. (For stays of 1, 2 or 3 weeks please enquire as we may be able to make an exception at the time of booking). Stays departing in October, November or December will not be accepted. Details of refunds for cancellations before or after arrival are included in our Conditions of Enrolment (27e and 27f).

Please note that Residential Accommodation is provided by a third party Residential Accommodation Agency

Please read our full Conditions of Enrolment.

Accommodation - Halls of Residence

THE STAY CLUB CAMDEN

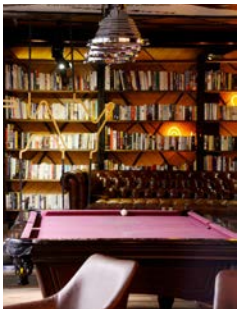
LOCATION

Camden is one of London's most popular tourist destinations. The residence is close to Camden Lock, in the heart of the famous Camden Market and only a 5-minute walk to Camden underground station (6 underground stops on the Northern Line to Finchley Central - less than a 15- minute journey on the underground).

DESCRIPTION

The residence consists of Single and Twin/Double Occupancy Studios. The studios have a private kitchenette (fridge freezer, microwave, cooker, kettle, pans, cutlery, glasses, and cups), 2 double beds, desk, free Wi-Fi, en-suite showers, plenty of mirrored cupboard space and are decorated to a high standard. Students can hang out with friends in the 2 lounge areas, play a game of pool or enjoy the outdoor space.

There is also a lovely café where students can buy snacks and drinks or have full meals (breakfast, lunch and dinner).



Prices

Accommodation Placement fee £55

Per room per week

	Less than 18 weeks	18 weeks or more
Single Occupancy Studio	£357	£349
Twin/Double Occupancy Studio	£399	£385

Features

- 24-hour Reception ✓
- CCTV ✓
- Free Wi-Fi ✓
- 2 Lounge areas with a large TV ✓
- Pool table area ✓
- Café/Restaurant ✓
- Outdoor Space with tables and chairs ✓
- Study rooms ✓
- Weekly cleaning of studios ✓
- Daily cleaning of Communal parts ✓
- Coin and Card operated Laundrette ✓
- Bike storage ✓
- Bed lined and towel provided ✓



TERMS & CONDITIONS:

Minimum age: 18 (At the Stay Club Camden students age 16 and 17 are accepted if accompanied by a responsible adult)

Minimum stay: 1 week

Details of refunds for cancellations before or after arrival are included in our Conditions of Enrolment (28c and 28d).

Please note that Residential Accommodation is provided by a third party Residential Accommodation Agency

Please read our full Conditions of Enrolment.

Accommodation - Halls of Residence HAWLEY CRESCENT, CAMDEN

LOCATION

Situated in Camden Town, one of the most creative and culturally diverse parts of London, Hawley Crescent is ideally located. It is only 2 minutes away from Camden Town, providing easy access to central London.

DESCRIPTION

Hawley Crescent is newly refurbished; the rooms are contemporary and stylish. The residence offers a great selection of studio rooms with luxurious double beds, a private en-suite bathroom, a private kitchen area and free wi-fi. The residence also has a sky lounge area and a roof top terrace with beautiful views of London. There is also a hospitality team available to advise students on all the fun things to do in Camden Town.

Prices

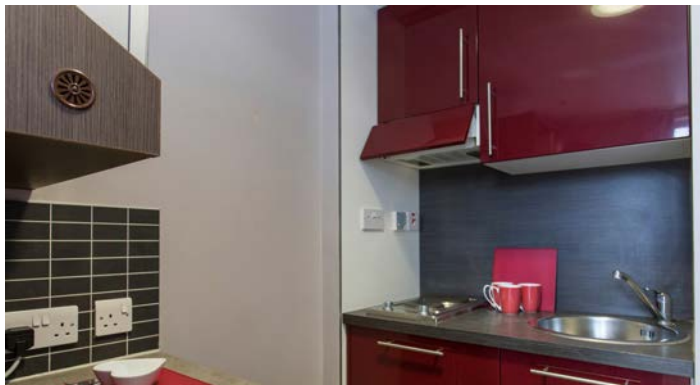
Accommodation Placement fee £55

Per room per week

Single Occupancy Studio	£357
Double Occupancy Studio	£395

Features

Free Wi-Fi	✓
Weekly cleaning of studios	✓
Bed lined and towel provided	✓
CCTV	✓
TV	✓
Coin operated washing machine	✓



TERMS & CONDITIONS:

Minimum age: 18 (Students age 16 and 17 are accepted if accompanied by a responsible adult) Minimum stay: 1 week
Details of refunds for cancellations before or after arrival are included in our Conditions of Enrolment (28c and 28d).

Please note that Residential Accommodation is provided by a third party Residential Accommodation Agency

Please read our full Conditions of Enrolment.

Accommodation - Halls of Residence

INTERNATIONAL STUDENT HOUSE

LOCATION

This residence is located in the heart of London just opposite Regent's Park and only a 5-minute walk to Warren Street underground station (Northern Line, 9 stops - 20 minute journey to Finchley Central).

DESCRIPTION

The Residence consists of Single, Twin, Triple and Quad rooms with shared bathrooms. Single and Twin en-suite rooms are also available.

The residence provides daily breakfast which is included in the daily price rates. Students can also buy lunch and dinner in the canteen style restaurant. For half-board, add £9 per day and for full-board £17 per day. The residence does not have a shared kitchen.



Prices

Accommodation Placement fee £55

Per person per day

Including Continental Breakfast

Single En-suite	£62
Single Room	£54
Twin En-suite	£45
Twin Room	£40
Triple Room	£34
Quad Room	£32

Features

24-hour Reception	✓
CCTV	✓
Free WiFi	✓
Bar (for over 18s only)	✓
Canteen style restaurant open for breakfast, lunch and dinner	✓
TV Room	✓
Weekly Cleaning of Rooms	✓
Daily cleaning of Communal parts	✓
Coin/Card operated Laundrette	✓
Bed lined provided	✓

TERMS & CONDITIONS:

Minimum age: 18 (At the Stay Club Camden students age 16 and 17 are accepted if accompanied by a responsible adult) Minimum stay: 2 nights.

Details of refunds for cancellations before or after arrival are included in our Conditions of Enrolment (29c and 29d).

Please note that Residential Accommodation is provided by a third party Residential Accommodation Agency.

Please read our full Conditions of Enrolment.

ALTERNATIVE ACCOMMODATION

- **Shared Student House** Comfortable and conveniently located. Single and shared rooms available.
- **Local friendly Hotel** (only 5-minutes' walk to the underground) with special prices for our students. Available for individuals or groups.
- **Serviced flats** (ideal for families)
- **High-quality Hostel** in two conveniently, centrally located areas of London (for group bookings only)

Further information on the above, other residences and flat shares, are available on request