

# INTERNATIONAL JUNIOR *Summer Camp 2026*



**HIGH QUALITY EDUCATION**  
with **PERSONAL ATTENTION**



## HIGHLIGHTS OF THE CAMP



### Great Location

Our summer camp enjoys a prime location in Crawley, just a short distance from London Gatwick Airport and with excellent transport links to central London and the South East.

Nestled within **140 acres** of picturesque grounds, the school offers students plenty of space for **outdoor activities** and **sports** in a **safe and inspiring environment**.

### Engaging Activities

Our enjoyable and fun activities, sports and excursions are led by our professional Nacel camp leaders, working alongside our qualified EFL Teachers.

### Semi-Realia Method

We employ our Semi-Realia method to develop students' English communication skills beyond the classroom. For each activity or visit, the students receive a relevant **vocabulary handout** along with historical information to enhance learning and **promote linguistic interaction**, all while having a great time using the **English language in real-life situations**.

### House Challenges

We organise House Challenges according to **age** and also **mix nationalities**, not only to develop students' teamwork but also their English communication skills, sense of unity and other essential life skills.

### Trusted Leadership

The camp is run by Nacel English School London, a **British Council** accredited English school based in North London, which has been educating junior and adult students for over 30 years. Nacel English School is part of the Nacel International group, **established in 1957**.

## SUMMER CAMP DATES

**Dates:** 5th July 2026 to 9th August 2026

**Arrival Days:** Sundays

**Departure Days:** Sundays

**Duration:** 1, 2, 3, 4 or 5 weeks, Sunday to Sunday, any week beginning 5th July 2026 to 9th August 2026

**Age Group:** From 11 to 17 years old



## PROGRAMME INCLUDES

- **15 hours of classroom-based lessons** per week, including **3 hours of Speaking Development** classes
- **Residential accommodation** in the school boarding facilities
- **Fun and educational Semi-Realia activities** in the afternoon and evening to encourage learning and practice of the English language
- **Two full-day excursions** per week, using our Semi-Realia method to encourage communication in English and learning
- **Full board** (breakfast, lunch, and dinner)
- **Entrance fees and transport** on excursions
- **All learning materials**
- End of course **certificate**
- Nacel **laundry services** once per week





## ENGLISH CLASSES

- **Taught by EFL Teachers:** Using the same proven methods as Nacel English School London, our Summer Camp programme focuses on maximising students' speaking skills while also developing listening, reading and writing abilities. All lessons are carefully tailored to suit the students' age group, ensuring effective and engaging learning.
- **Practical English:** Emphasis on real-world use and communication.



## EVENING ACTIVITIES

- **Fun-Filled Evenings:** Enjoy karaoke, movie nights, games nights and more.
- **Themed Events:** Join in on disco nights, talent shows, acting sessions, filmmaking and more.
- **Loads of Fun Ahead:** Exciting activities every night!



## ACTIVITIES

- **Sport & Recreation:** Enjoy on-site activities and sports led by Nacel teachers and activity / sport leaders.
- **Learn While Playing:** Plenty of opportunities to practise English in a fun, engaging way, with educational elements like vocabulary sheets to optimise the learning of new English vocabulary within the activity context.
- **Creative Fun:** Many arts & crafts, bin bag fashion and more.



## EXCURSIONS

- **Guided Tours:** Explore London with enriching experiences led by the Nacel team.
- **Educational Fun:** Contextual vocabulary and historical insights.
- **Iconic Sights:** Visit famous places and landmarks like the Natural History Museum, the London Eye, Camden Town, the British Museum, Oxford Street, Tower Bridge, the Tower of London, Buckingham Palace, Madame Tussauds and more!



## HOUSE CHALLENGES

- **Engaging Activities:** Age-appropriate and culturally diverse challenges.
- **Promote English Use:** Encourage interaction and community spirit.
- **Skill Development:** Focus on communication, collaboration, creativity and critical thinking.



Watch Video

Quality Education with  
**PERSONAL  
ATTENTION**



## SCHOOL FACILITIES

The school provides classrooms equipped to the **highest standards**, including smart boards, a large computer room and a drama studio for performances. The school also boasts extensive **indoor and outdoor sports facilities**, encouraging students to enjoy a wide range of activities:

- Football: two pitches
- Tennis: three hard courts and three grass courts
- Basketball: covered astro court
- Swimming: indoor pool
- Golf: 9-hole pitch and putt / footgolf course
- Netball
- Badminton
- Table Tennis: five indoor tables and one outdoor table
- Snooker & Pool: three snooker tables
- Rugby
- Cricket
- Chess
- Dance
- Athletics: grassed area with two long jump pits
- Hockey
- Rounders

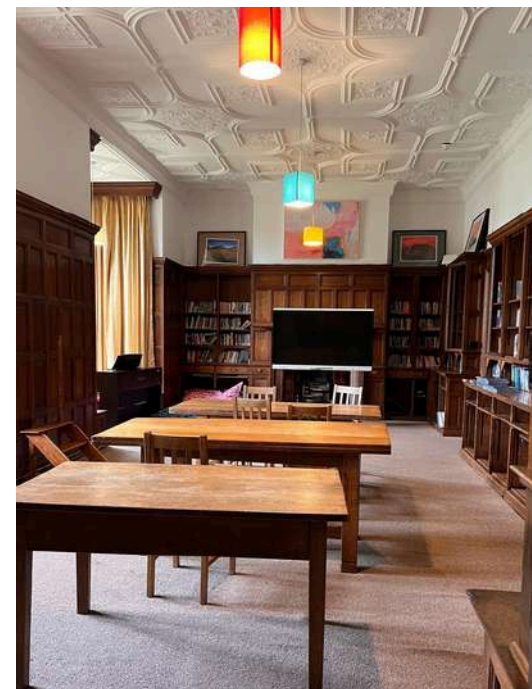


## SCHOOL FACILITIES

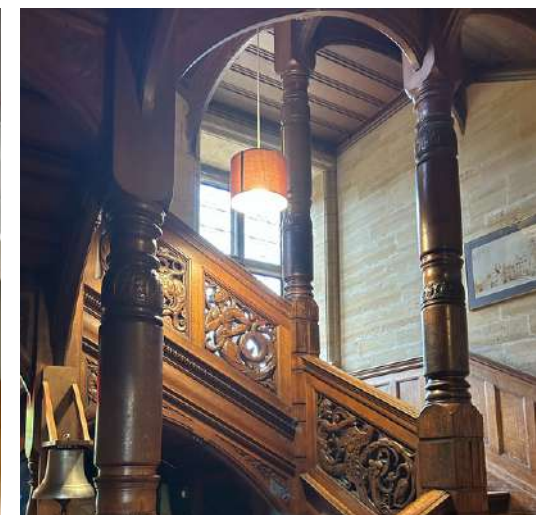


## SCHOOL & BOARDING HOUSE FACILITIES

The boarding house provides a welcoming, **family-style environment** where students feel at home. Spacious and comfortable dormitories are thoughtfully designed to **encourage friendships and social interaction**, while modern bathroom and shower facilities provide privacy. Cosy common areas offer students the perfect space to **relax and spend time with friends**. The boarding house is carefully supervised by our dedicated staff, who provide attentive care and support.



# SCHOOL & BOARDING HOUSE FACILITIES



## TYPICAL WEEKLY SCHEDULE

	Sunday	Monday	Tuesday	Wednesday	Thursday	Friday	Saturday	Sunday
7:45 - 8:45	Breakfast & Free time							
8:45 - 9:00	Daily Meeting							
9:00 - 12:15	Arrival Day & Settling In & Light Activities	English classes <i>15-minute break</i>	English classes <i>15-minute break</i>	Full Day Excursion <i>with packed lunch</i>	English classes <i>15-minute break</i>	Full Day Excursion <i>with packed lunch</i>	English classes <i>15-minute break</i>	Departure Day or Activities
12:15-13:30		Lunch & Free time	Lunch & Free time		Lunch & Free time		Lunch & Free time	
13:30-14:30		Speaking Development classes	Speaking Development classes		Speaking Development classes		Speaking Development classes	
14:30 - 18:00		Afternoon Activities <i>with vocabulary practice sheet - Learn while having fun!</i>	Afternoon Activities <i>with vocabulary practice sheet - Learn while having fun!</i>		Afternoon Activities <i>with vocabulary practice sheet - Learn while having fun!</i>		Afternoon Activities <i>with vocabulary practice sheet - Learn while having fun!</i>	
18:00 - 20:00	Free time - Visit the local shops or use the beautiful school grounds Dinner & Free time							
20:00 - 22:00	Evening Activities or House Challenge <i>with vocabulary sheet - Learn while having fun!</i>	Evening Activities or House Challenge <i>with vocabulary sheet - Learn while having fun!</i>	Evening Activities or House Challenge <i>with vocabulary sheet - Learn while having fun!</i>	Evening Light Activities	Evening Activities or House Challenge <i>with vocabulary sheet - Learn while having fun!</i>	Evening Light Activities	Evening Activities or House Challenge <i>with vocabulary sheet - Learn while having fun!</i>	Evening Activities or House Challenge <i>with vocabulary sheet - Learn while having fun!</i>
22:00 - 22:30	Free Time socializing, phone time, personal time, prepare for bed.							
22:30	BEDTIME							






Join us for a fun, unforgettable experience  
and high academic results!

 [info@nacelesl.co.uk](mailto:info@nacelesl.co.uk)

 +44(0)20 8343 3567

 [www.nacelesl.co.uk](http://www.nacelesl.co.uk)

 53 Ballards Lane  
London N3 1XP



[Watch Video](#)